

Build documentation for:

SYSTEM X ENVELOPE

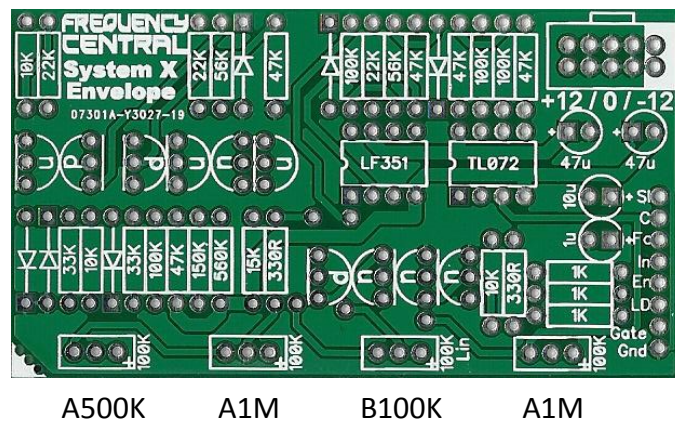
Based on the Roland System 100M ADSR

FREQUENCY CENTRAL

Version 2 / March 2013

Notes:

- This version has the pot values incorrectly labelled on the screen print.
- This version is suitable for only Alpha 9mm pots.



Key to PCB screen print:

n: This signifies NPN BC547 transistors. Note the correct pinout as shown by the half circles.
p: This signifies PNP BC557 transistors. Note the correct pinout as shown by the half circles.

On the right hand edge you will see the following:

Sl: Connects to lug 1 of the slow/fast SPDT switch.
C: Connects to lug 2 of the slow/fast SPDT switch.
Fa: Connects to lug 3 of the slow/fast SPDT switch.
In: Inverted envelope output
En: Normal envelope output
LD: To LED anode (cathode connects to ground).
Gate: Gate input
Gnd: Ground

Please observe the correct polarity of the 6 diodes and 4 capacitors.
Other transistor types can be used (eg 2N3904/2N3906), but please observe the correct Pinout.

Bill of materials

330R x 2	1uF x 1 (Fast cap)	LF351 x 1	A500K x 1
1K x 3	10uF x 1 (Slow cap)	TL072 x 1	A1M x 2
10K x 3	47uF x 2	BC547 x 7	B100K x 1
15K x 1		BC557 x 3	
22K x 3		1N4148 x 6	3.5mm sockets x 3
33K x 2			SPDT switch x 1
47K x 5			
56K x 2			
100K x 4			
150K x 1			
560K x 1			

