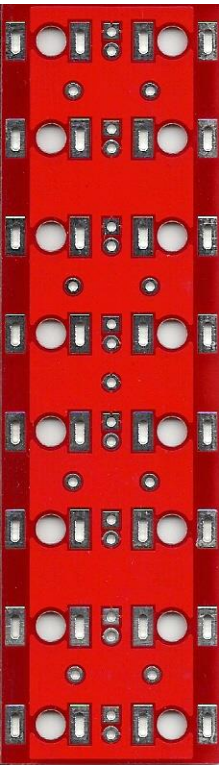


# FREQUENCY CENTRAL

Build documentation for:

# MULTIPOLES

Main PCB:



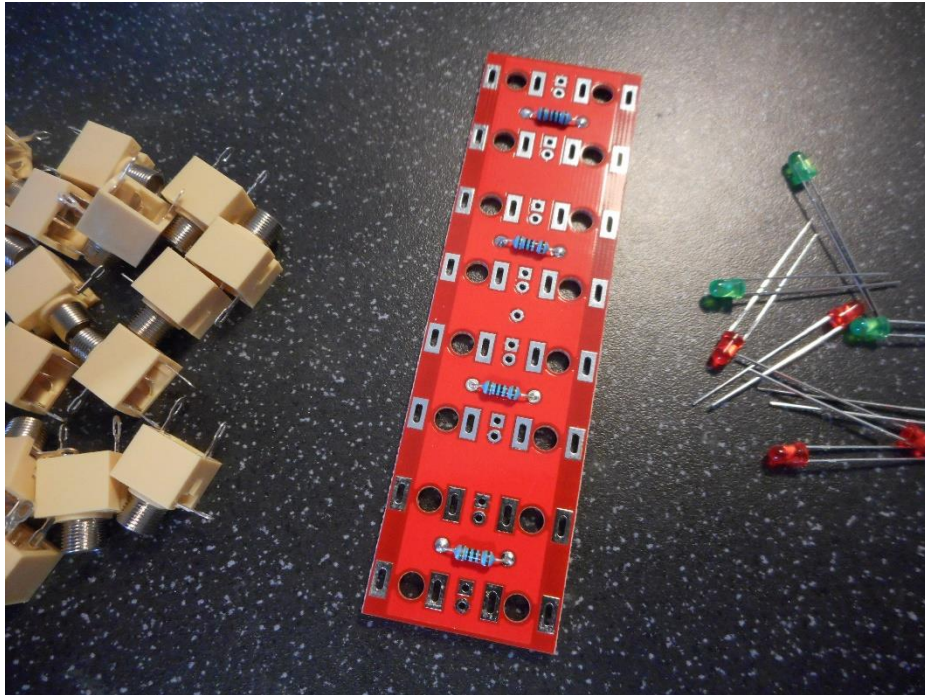
Panel PCB:



**Bill of Materials**

10K x 4		3mm red LED x 4 3mm green LED x 4	<a href="#">Kobiconn sockets x 16</a>
---------	--	--------------------------------------	---------------------------------------

1. Solder the 4 x 10K resistors in place.

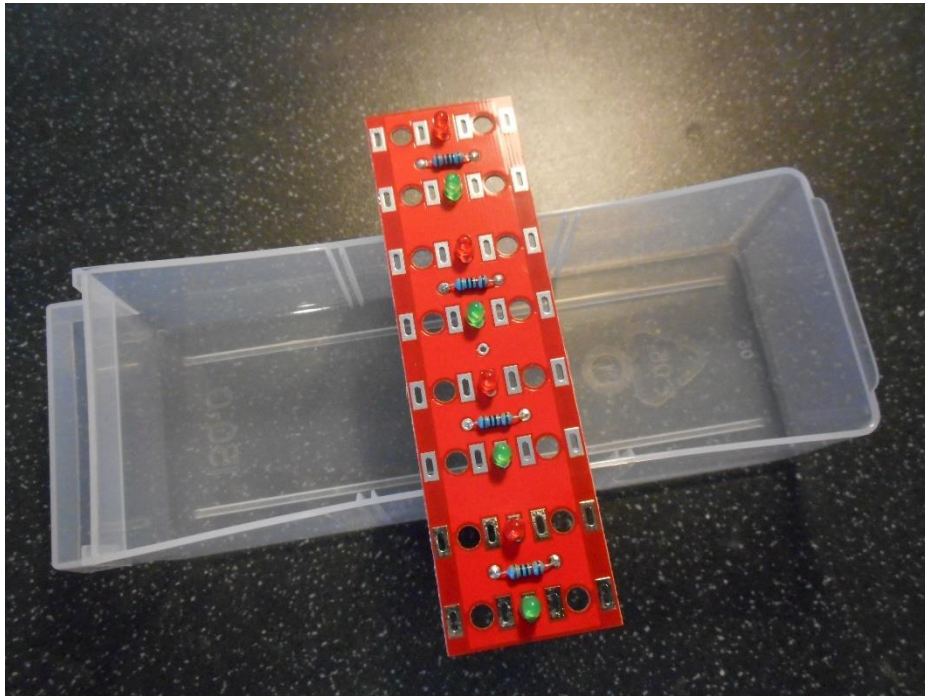


2. Snip ground tabs of sockets

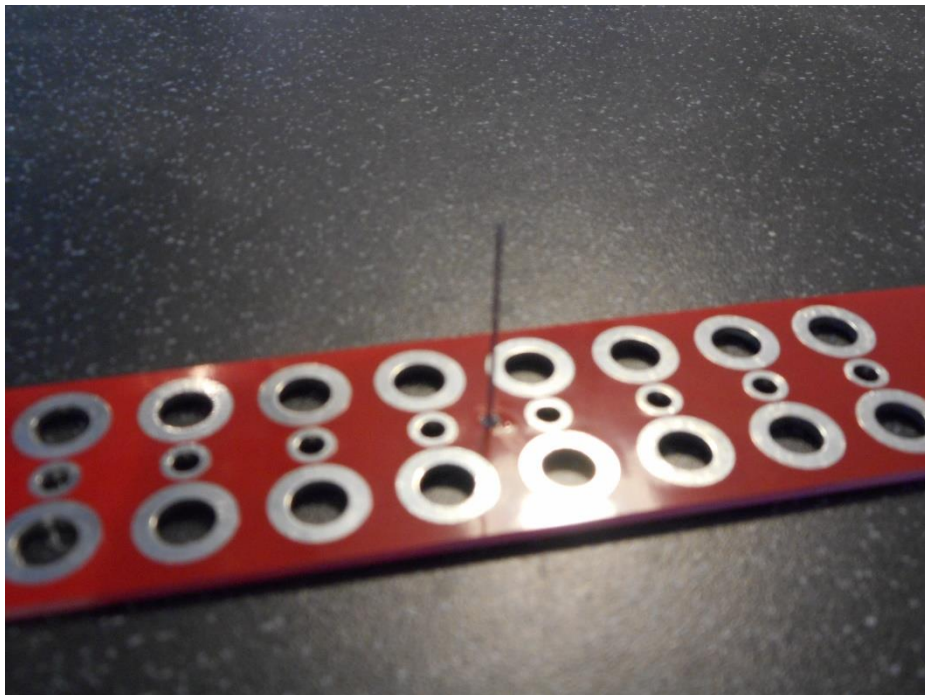




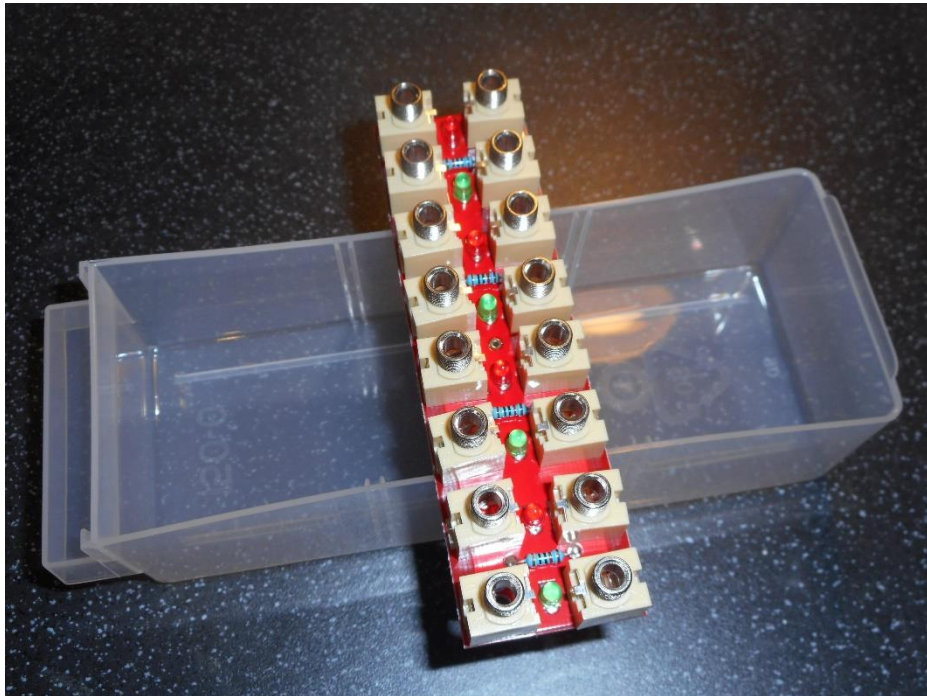
3. Insert LEDs (don't solder yet) – long legs into square holes. The square hole will always be at the top.



4. Solder the ground pin to the rear of the panel PCB (use a cut off resistor leg). Make sure it doesn't poke out the front!



5. Place the 16 x sockets in position (don't solder yet). Remember that the cut of ground tabs should all face inwards.



6. Place the panel PCB over the sockets.

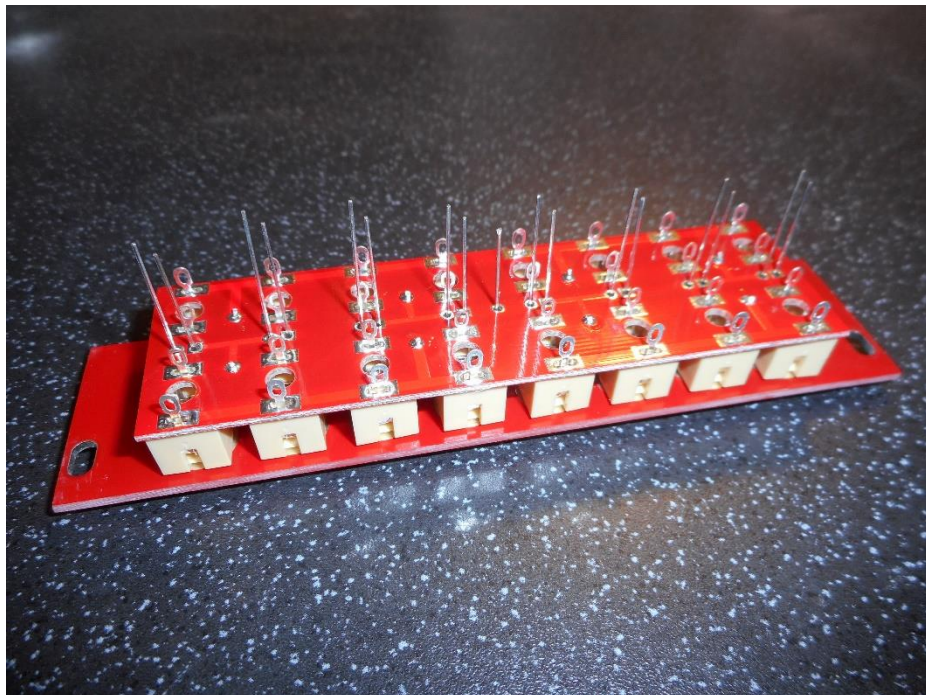




7. Bolt the sockets to the panel PCB, making sure to keep their tabs in position on the main PCB.



8. Flip the whole thing over, correctly align all the sockets then solder them in place. Pop the LEDs through their holes in the panel PCB and solder them in position.



RDH 03/01/14